



YOUTH & FAMILY SERVICES

Parents As Leaders Reaching the Hard to Reach Families

Amanda McMillen, LCSW

Rebecca Waterstone, MS

Introductions

” Name

” Program model

” One reason why you chose to begin your conference with this workshop

Parent Engagement

- “ What does it mean?
- “ How does your program incorporate parent engagement?

Parent Engagement

Level of engagement depends on:

“ Opportunity

“ Relationship

Opportunity for Engagement

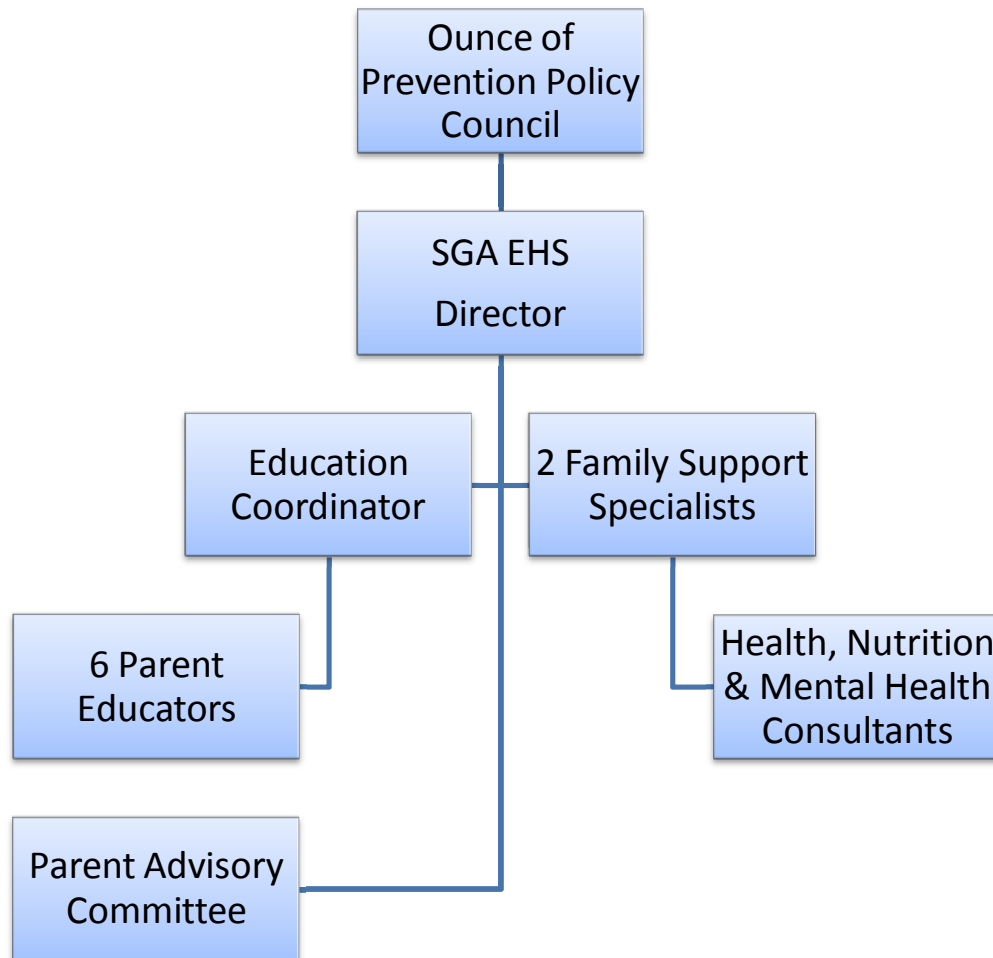
“ Program Structure

- . How does your program incorporate parent involvement?
- . What messages are being communicated about parent engagement within your program- to staff- to families?

SGA's Program

- “ Early Head Start Home Visiting Program
- “ Funded by the Ounce of Prevention
- “ Serve 72 infants and toddlers (0-3) and their families
- “ Parents As Teachers Curriculum

Program Organization Chart



Program Activities

- “ Weekly Home Visits
- “ Group Socializations
- “ Parent Advisory Committee
- “ Parent Trainings
- “ Support Group
- “ Field Trips
- “ Case management
- “ Policy Council
- “ Health, Nutrition and Developmental Monitoring
- “ Parent/Teacher Conferences

Activity

“ I want them to feel...

“ I want them to see...

“ I want them to hear...

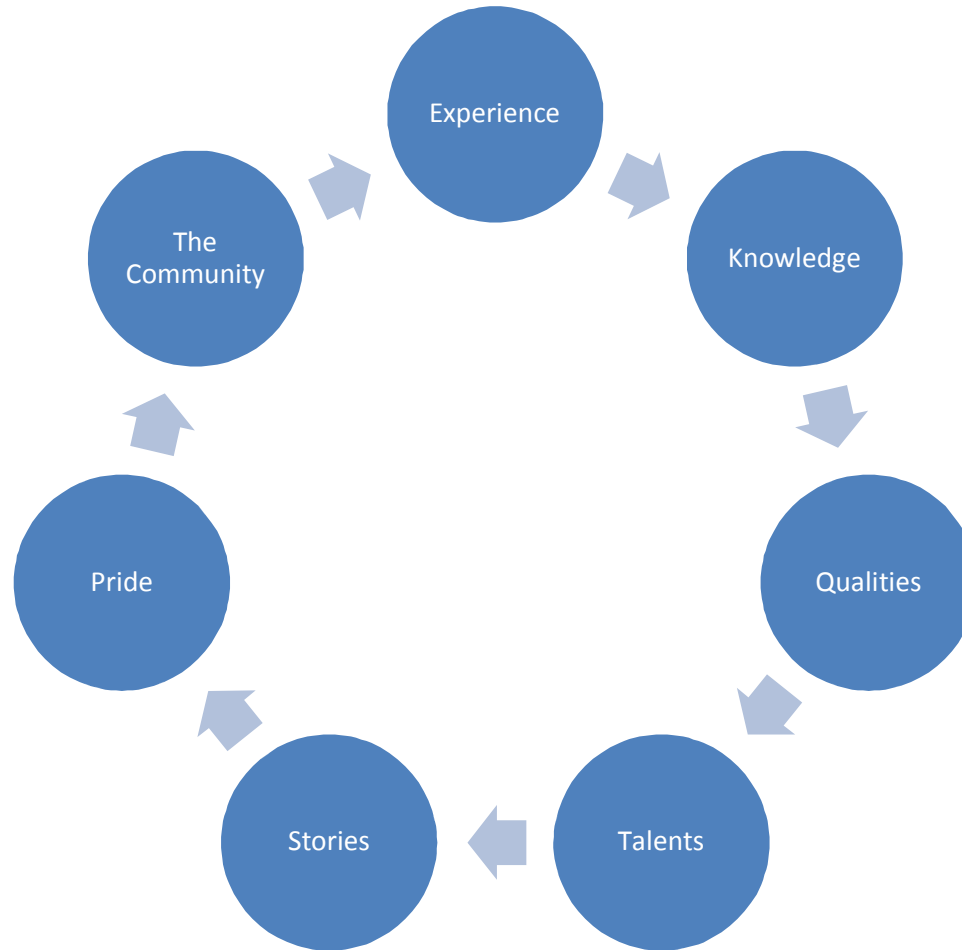
Developing the Relationship

- “ Mindful of First Impressions
- “ Be Consistent, Courteous and Respectful
- “ Be Genuine
- “ Start where the family is

Snapshot



What Are Strengths



Day <1.5> Building a Strengths-Based Partnership with Parents. Home Visiting the PITS Way: A Training Curriculum

Golden Rules

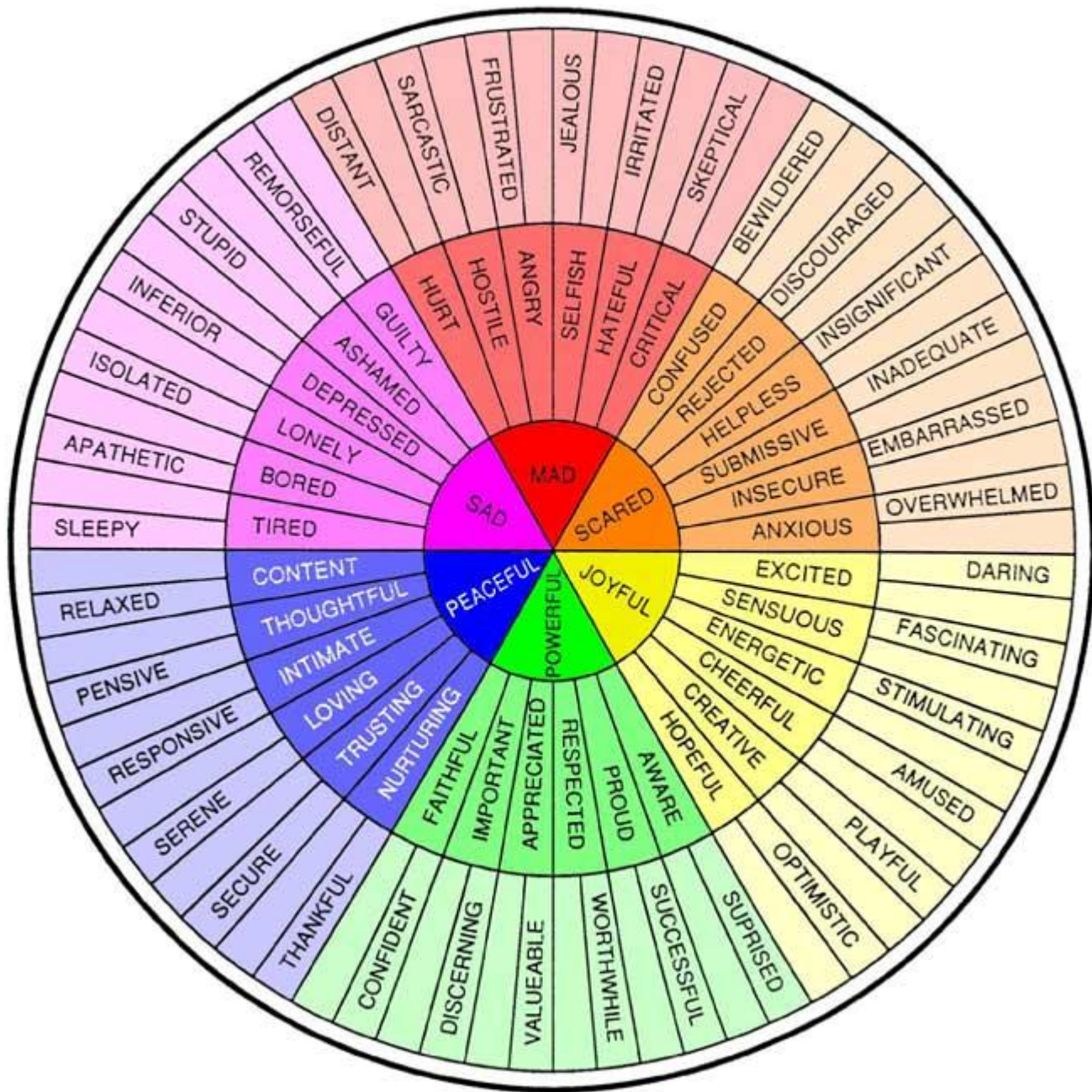
“When something you observe concerns you, ask questions. Instead of assuming, gather more information. Instead of trying to fix a problem, encourage the parent to explore and determine what works best for their baby.”

~Nick Wechsler

Another Golden Rule

“When you tell someone something about themselves it is easy for them to feel defensive. When the person is able to figure the same thing out about themselves, it feels like self enlightenment.”

~Nick Wechsler



When Confronted with a Challenging Situation...

- 1) STOP—How are you feeling, what is your body language demonstrating?
- 2) Reflect—Why is the situation causing this reaction?
- 3) Empathize—What might the parent be feeling and what might the baby be feeling?
- 4) Ask—Engage parent in open-ended question to gain more understanding.
- 5) Reflect & Revisit—Utilize supervision, and re-examine with family.

Continuum of Parent Leadership

“ Personal

“ Family

“ Programmatic

“ Community

Personal Leadership

- “ Setting life goals (ESL, GED)
- “ Taking ownership of child’s learning



Family Leadership

- “ Advocating for children (e.g. medical or school setting)
- “ Utilizing community resources

Programmatic Leadership

- “ Parent Advisory Committee
- “ Policy Council
- “ Mentorship
- “ Interviews/Focus Groups
- “ Celebrations testimonies
- “ Recruiters

Community Leadership

- “ Legislative Advocacy
- “ Media Interviews
- “ Neighborhood improvement

Questions

